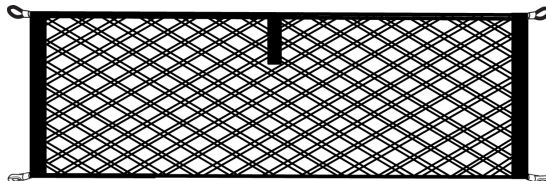
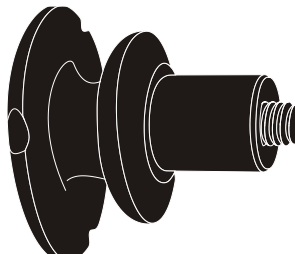

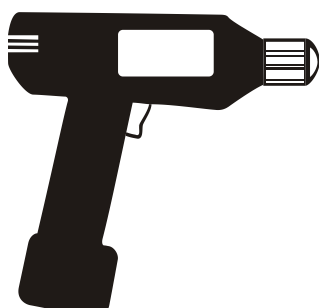






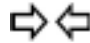







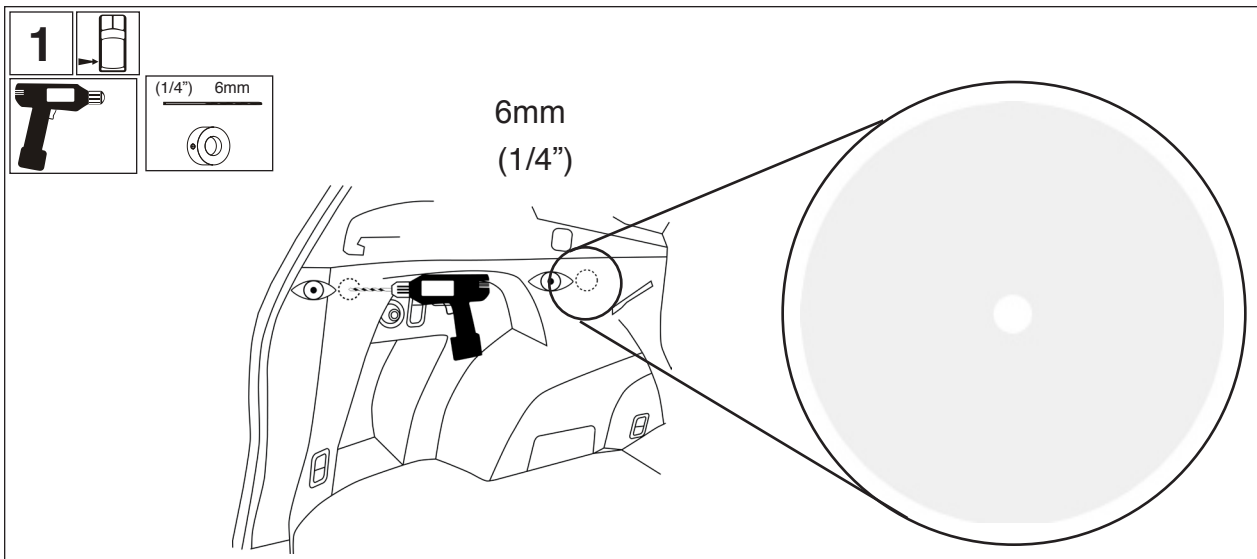
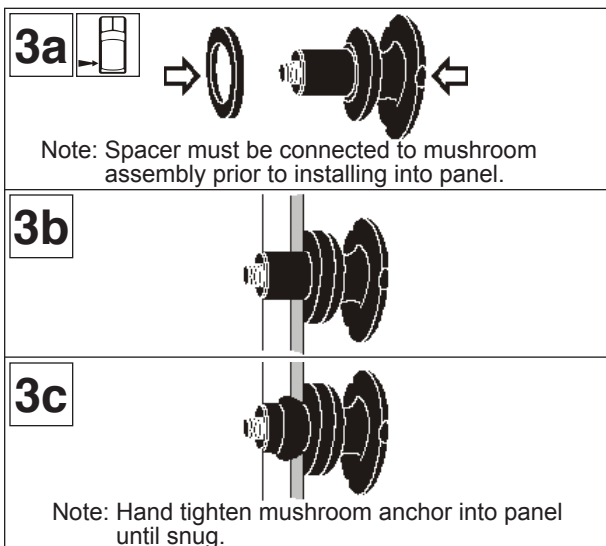
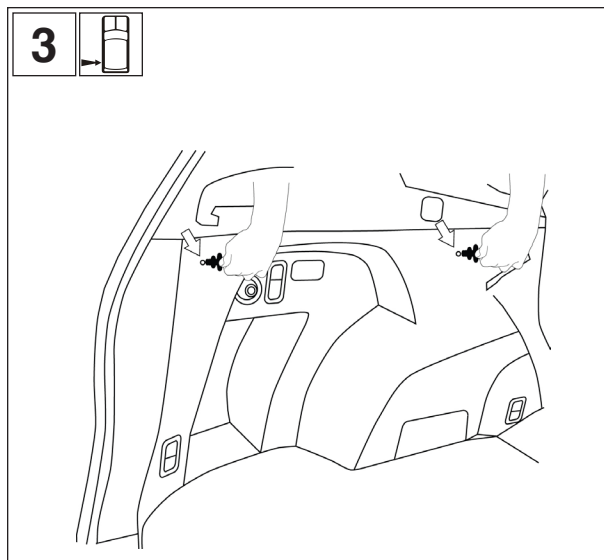
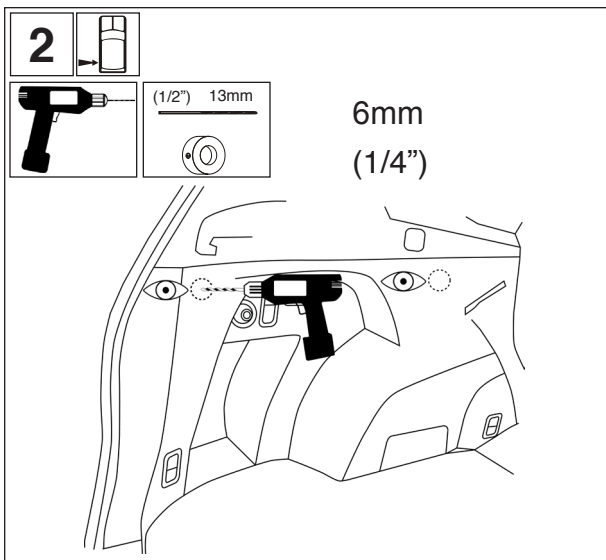


<div>SUBARU®</div>		PART NUMBER: F551SSG010				
INSTALLATION INSTRUCTIONS		DESCRIPTION: SUBARU FORESTER				
		SIDE NET				
A	KIT CONTENTS:	2X	B	4X	C	4X
						
TOOLS REQUIRED:						
					(1/2") 13mm Drill Bit	
					(1/4") 6mm Drill Bit	
					Drill Stop	
Meaning of Characters:						
<div><div><div></div><div>: Remove</div></div><div><div></div><div>: Install</div></div><div><div></div><div>: Disconnect</div></div><div><div></div><div>: Connect</div></div><div><div></div><div>: Location of pre-arranged mark</div></div><div><div></div><div>: Passenger side rear cargo area</div></div><div><div></div><div>: Driver side rear cargo area</div></div></div> <div><div><div>T</div><div>: Tightening Torque</div></div><div><div></div><div>: Loosen</div></div><div><div></div><div>: Discard</div></div><div><div></div><div>: Recyclable</div></div><div><div></div><div>: View</div></div></div>						
PART NUMBER F551SSG010	ISSUE 01	DATE 09/12/12	SUBARU OF AMERICA		PAGE 1/2	



Note: Look for dimpled, untextured area.



Note: Installation is identical for opposite side of vehicle.

